

GWAL-LF Large Flange Threaded Insert

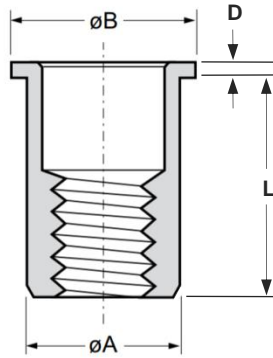
Aluminium · Large flange · Round · Open end
M3 - M10

Features

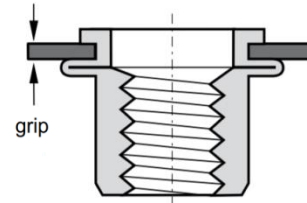
- Designed to provide load bearing threads in thin sheet materials
- Large flange head provides a load bearing surface and reinforces the hole to prevent push-out

Material

- Aluminium 5052



Before Placement



After Placement

Part No.	Thread Size	Grip Range		Hole Size	ϕA	ϕB	D	L
		min.	max.					
GWAL-LFM3-0520	M3	0.5	2.0	5.0	5.0	8.0	0.75	9.75
GWAL-LFM3-2030		2.0	3.0					10.75
GWAL-LFM4-0530	M4	0.5	3.0	6.0	6.0	10.0	0.75	10.75
GWAL-LFM4-3045		3.0	4.5					12.25
GWAL-LFM5-0530	M5	0.5	3.0	7.0	7.0	11.0	1.0	12.0
GWAL-LFM5-3055		3.0	5.5					15.0
GWAL-LFM6-0530	M6	0.5	3.0	9.0	9.0	13.0	1.5	14.5
GWAL-LFM6-3055		3.0	5.5					16.5
GWAL-LFM6-5580		5.5	8.0					19.0
GWAL-LFM8-0530	M8	0.5	3.0	11.0	11.0	16.0	1.5	16.0
GWAL-LFM8-3055		3.0	5.5					18.5
GWAL-LFM8-5580		5.5	8.0					21.5
GWAL-LFM10-0835	M10	0.8	3.5	12.5	12.4	18.5	2.25	19.75
GWAL-LFM10-3560		3.5	6.0					22.75

Thread Size	Max. torque	Pull-out	Torque-to-turn	Shear strength
	Nm max.	Kn	Nm	kN
M3	~1.9	> ~3.1	~0.8	~0.6
M4	~4.9	> ~4.5	~1.4	~1.1
M5	~4.9	> ~5.2	~1.5	~1.6
M6	~16.0	> ~10.5	~3.2	~2.4
M8	~33.0	> ~15.0	~5.3	~2.9
M10	~39.5	> ~20.0	~7.0	~3.7